

Historic, Archive Document

Do not assume content reflects current scientific knowledge, policies, or practices.



BULBS and PLANTS for FLOWER LOVERS
Pfeiffer's
SPECIAL OFFER
THE PFEIFFER NURSERY, WINONA, MINN.

SPRING 1937

POSTMASTER: Return postage guaranteed if undelivered.



SEC. 562, P. L. & R.

☆ APR 17 1937 ☆

U. S. Department of Agriculture.

U. S. DEPARTMENT OF AGRICULTURE,

WASHINGTON, D. C.

BUREAU OF PLANT INDUSTRY
Fruit and Vegetable Crops and Diseases
M. R. N.

GFC 8-3591



FLOWER BARGAINS

Use the enclosed Order Blank

GIANT DAHLIA BARGAIN
Six Beauties—All Different
Large Flowers
ALL 6, POSTPAID, **\$1.00**
ONLY

IRIS BARGAIN
Rainbow Collection
50 Varieties—All Different
Unlabeled
30 PLANTS, POSTPAID, **\$1.00**
ONLY

DELPHINIUM BARGAIN
“Gold Medal Hybrids”
6 Strong 2-Year Clumps
ALL 6, POSTPAID, **\$1.00**
ONLY

LILY BARGAIN
One Each of Five Fine Hardy Lilies
All Different—Properly Labeled
ALL 5, POSTPAID, **\$1.00**
ONLY

PEONY BARGAIN NO. 1
6 Fine Varieties—All Profuse Bloomers
A Real \$2.70 Value
ALL 6, POSTPAID, **\$1.00**
ONLY

GLAD BARGAIN NO. 4
100 Bulbs
1 to 1 1/4" e to Bloom
Two Each of 50 Varieties
Unlabeled
100 BULBS, POSTPAID, **\$1.00**
ONLY

ROCK GARDEN BARGAIN
“Sedum Collection”
Two Each of Five Different Varieties
A \$2.00 Value
10 PLANTS, POSTPAID, **\$1.00**
ONLY

PHLOX BARGAIN
7 Varieties—All Different
Including Thor, Eclairer,
Independence, Lothair, and three other
equally good ones.
ALL 7, POSTPAID, **\$1.00**
ONLY

GLAD BARGAIN NO. 1
“First Prize Collection”
12 World Beaters—All Different
Properly Labeled
12 BULBS, POSTPAID, **\$1.00**
ONLY

HEMEROCALLIS BARGAIN
One Each of Four Fine Varieties
Properly Labeled
ALL 4, POSTPAID, **\$1.00**
ONLY

Pompon Dahlia BARGAIN
Six Extra Fine Varieties
All Different
ALL 6, POSTPAID, **\$1.00**
ONLY

**ANY FOUR \$1.00
BARGAINS \$3.50
FOR**

Select any four of these \$1.00 Bargains (\$4.00 total) and send only \$3.50. Or four of any one Bargain at \$3.50. Your order will be sent postpaid.
THE PFEIFFER NURSERY
WINONA, MINNESOTA

SEE COMPLETE DESCRIPTIONS INSIDE FOLDER

Pfeiffer's Famous Peonies

25,000 PLANTS OFFERED AT HALF PRICE

This is a real bargain. We have not boosted up these prices and then cut them in half. Prices quoted are the low list price we had in our last fall's catalog, but the half price bargain is for the following list only.

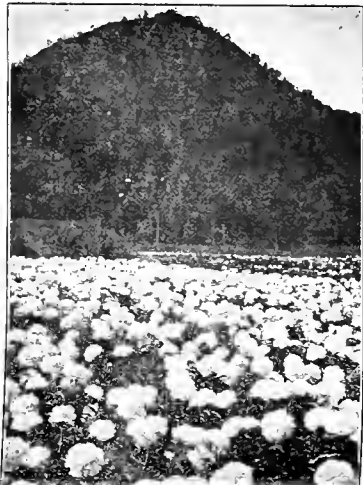
All plants are large selected roots with from 5 to 5 eyes or more.

The large roots we are offering this spring are the kind you like to receive. Many of them will actually bloom two months after planting.

Spring seems to be the natural time for setting out plants, and you just can't help but have good results from these large plants that have been selected and reserved purposely for our regular spring customers.

These plants are all in our cold storage cellar, and can be shipped any time you want them. The earlier you get them planted, the better.

REMEMBER! All Spring Peony Offers Expire May 15th, 1937.



PHOTOGRAPH OF ONE OF OUR FIELDS

Take your choice—all at half price

List Price	Sale Price	List Price	Sale Price
Achille, bluish white	\$.35	Potski, red	\$.17 1/2
Alba Sulphurea, sulphur white	.50	Queen Victoria, white	.35
Albae Lorraine, creamy white	.50	Rachel, garnet red	.35
Alexander Dumas, salmon rose	.35	Reine Hortense, soft pink	.75
Albert Crousse, delicate sea-shell pink	.50	Rose Here, bright crimson, early	1.00
Asa Gray, lilac pink	.50	Rubra Superba, rich red, late	.50
Augustin D'Hour, brilliant red	.50	Sarah Bernhardt, apple-blossom pink	.75
Aurora, milky white	.50	Sister Annie, pink	.25
Candidissima, dainty pink, fading white	.35	Solange, buff and pale salmon pink	1.00
Charles McKelip, crimson	.50	Souv. de L'Exposition, fine rose pink	.50
Chestine Gowdy, silvery white, fragrant	.50	Susan E. Anthony, light pink, fading pure white	.35
Clair DuBois, satin pink, extra large	.50	Tourangelle, delicate mauve and La France rose	1.00
Comte d'Osmond, white	.35	Venus, pale hydrangea pink	.50
Couronne d'Or, late large white	.50	Wm. Penn., late rose pink	.35
Delicatissima, delicate pink	.35		
Duc de Wellington, creamy white	.50		
Duchess de Nemours, sulphur white	.50		
Eduis Superba, rose pink	.50		
Etta, pale pink	.50		
Eugene Verdier, hydrangea pink	.50		
Eugenie Verdier, pale hydrangea pink	.50		
Fanny Crosby, soft pink, yellow center	.50		
Felix Crousse, red	.50		
Fragrans, deep rose	.35		
Francois Rousseau, brilliant red	.75		
Grandiflora, very large, shell pink	.50		
Grover Cleveland, dark crimson	.50		
H. F. Reddick, dark crimson	.50		
Jeanne d'Arc, pink and white	.35		
Lady Bramwell, light rose pink	.35		
La Lorraine, creamy white	1.50		
La Perle, light pink	.50		
La Rosee, white	.35		
La Sublime, crimson	.35		
La Tulipe, bluish white	.35		
L'Indispensable, pink	.35		
Livingstone, pale lilac rose	.50		
Marcella Dessert, creamy white	.50		
Marguerite Gerard, large pink	.50		
Marie Crousse, pale lilac rose	.50		
Marie Lemoine, large pure white	.50		
Mary Brand, crimson	.35		
Midnight, deep maroon	.35		
Mias Henniger, flesh pink, fading creamy white	.50		
Mme. Calot, hydrangea pink	.50		
Mme. Crousse, white	.35		
Mme. Emile Galle, sea-shell pink	.35		
Mons. Dupont, large white, splashed crimson	.50		
Octavia Demay, pale pink	.35		
Officialis Rosea, deep rose pink, early	.50		
Pierre Duchartre, deep pink	.35		

Japanese Peonies

Crown on Crown, shades of pink	.50	.25
Geraldine, carmine violet	.50	.25
Lemon Queen, creamy white	.50	.25
Labolas, dark crimson	.50	.25

PEONY BARGAIN NO. 1

SIX FINE VARIETIES—ALL PROFUSE BLOOMERS

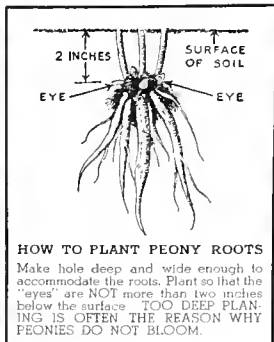
La Sublime, brilliant crimson	.50
Alba Sulphurea, creamy yellow	.50
Chestine Gowdy, silvery pink	.50
Queen Victoria, pure white	.50
Souv. de L'Exposition, clear deep rose	.50
Eugene Verdier, hydrangea pink	.50

A Real \$2.70 Value

ALL SIX, POSTPAID ONLY \$1.00



EUGENIE VERDIER



MEDAL WON BY PFEIFFER'S PEONIES

The most dependable of all hardy plants Phlox



THOR

The Phlox is one of the most satisfactory of all the perennials for the border as well as group planting by itself. For landscape effect there is nothing that surpasses them on account of their dependability and long blooming season. They bloom from early July until September or until frost cuts them down. Owing to the many brilliant colors, the demand for Phlox is increasing every year. For best results plant two feet apart in rich loamy soil and open sunlight. Divide and transplant every third year. We suggest you make your selections early.

Three of Any One Variety at the Dozen Rate

	Each	Per Dozen
Africa, deep crimson	\$.25	\$2.50
Eclairer, rose magenta, white eye	.20	2.00
Frau Anton Buchner, fine white	.20	2.00
George Stroblein, orange red	.20	2.00
Independence, pure white	.20	2.00
Lavender Beauty, clear deep lavender	.20	2.00
Lothair, rose-red, darker eye	.20	2.00
Mrs. Jenkins, white	.20	2.00
Prof. Virechow, bright carmine red	.25	2.50
Ryngstrom, pink	.25	2.50
Thor, salmon pink	.25	2.50

PHLOX BARGAIN

SEVEN VARIETIES, INCLUDING:

Thor, salmon pink, Eclairer, magenta; Independence, pure white; Lothair, rose-red, and three other good ones.

All seven plants, postpaid, ONLY **\$1.00**

MIXED PHLOX

We have a fine collection of Phlox plants on which the labels have become lost, or for various other reasons are now grown as mixed. They all are good and will make a wonderful show in a mass planting.

\$1.50 per dozen \$10.00 per 100
ALL POSTPAID

Pfeiffer's Fine Hardy Lilies

The following list of Hardy Lilies are the finest of them all. They all are unusually hardy and will winter over in the ground in the severest weather. The bulbs we use are all large flowering size which will bloom freely the first season.

HENRYI (The Golden Speciosum). Its charm, rich color, hardiness and dependability place it high among the favorite garden Lilies. Tall grower, excellent for cutting. Blooms in August. Large bulbs 25c each; 5 for 65c

PHIL. FORMOSANUM. One of the most beautiful of the trumpet-flowered Lilies, also the latest to bloom. Long, slender tube, white inside, streaked with chocolate outside. Spicy fragrance. Plant 8 inches deep in rich leaf mold soil, in a sunny location 50c each; 5 for 75c

REGALE (Regal Lily) White, shading to yellow in the center, and tinted pink on the outside. Blooms in July, 2 to 5 feet. Large bulbs 25c each; 5 for 65c

TENUIFOLIUM (Coral Lily). Small, bright scarlet flowers on slender stems. 1 to 2 feet. Excellent for cutting. Pleasing fragrance 20c each; 5 for 50c

UMBELLATUM (Candlestick Lily). Orange-red flowers in upright umbels; resembles Elegans, but grows taller and is a few days later. Large bulbs 20c each; 5 for 50c

LILY COLLECTION

One Each of the Above Five Lilies All Five Postpaid, ONLY **\$1.00**

Three Each of the above Five Lilies All Fifteen Postpaid, ONLY **\$2.50**



REGAL LILY

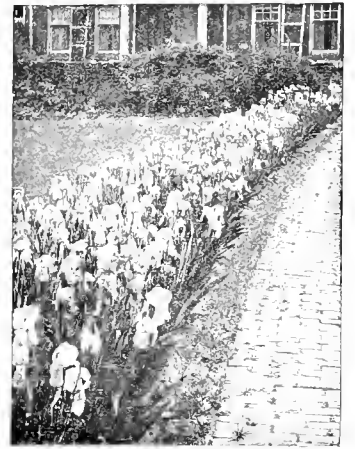
The finest of all hardy lilies

THE PFEIFFER NURSERY

Winona, Minnesota

Magnificent Irises

Irises are undoubtedly one of the most popular of all the hardy perennials. No other perennials available to your gardens combine so many good qualities. They are inexpensive, extremely hardy, may be grown under a great variety of conditions with a minimum amount of care, and they have a wonderful range of color.



A BEAUTIFUL IRIS BORDER



CUPS WON BY PFEIFFER'S IRIS

Irises are easy to grow and can be planted almost any time the ground is not frozen. They will do best in a sunny, well drained location in a medium loose, mellow soil.

We are listing just a few of the more popular varieties. They all are good. Planted this spring, you may expect many years of pleasure from them.

Iris listed below 15c each—2 for 25c

Afterglow, self blue
Alcazar, violet and purple
American Black Prince, velvety dark purple
Ann Page, large lavender blue
Arapahoe, lavender purple
Ariel, light violet
Asia, lavender and violet purple
Brenthis, lavender and pansy violet
Caprice, wine red
Chalice, true yellow self
Chicoree, dark blue
Coronation, clear golden yellow
Crusader, deep violet blue
Danzel, rose lavender
Dejah, silver blue and mauve
Dr. Hideraside, dark blue
Donald Maxson, lobeliotrope and wine
Dream, extra fine lilac pink
Edith Scoville, purple wine
Eldorado, yellow-bronze and purple
Esplendido, red-purple bicolor
Evanine, rich velvety rose-violet
E. W. Rosnick, rufous and heliotrope
F. B. Schermerhorn, fine lavender blue
Florence Irene, rose-pink
Franklin Beynon, light pink
Grace Cameron, dark lavender
Halo, clear blue
Harmony, rich purple blue
Helen Frances, tall, deep lavender
Hilton Lucas, lavender and violet
Imperator, deep red violet
K. E. Lees, fragrant white and lavender
Lady Byng, pale lavender
L. A. Williamson, extra fine large violet purple
Lilian Rose, dainty pink
Lois, light blue
Majestic, lavender mauve
Mary Gibson, rose violet and buff
Midway Pink, rufous and white, dusky pink
Mme. Chobaut, white shading yellow and blue
Mme. Henri Cayeux, reddish violet-purple
Mother of Pearl, pale blue-lavender
Mrs. A. K. Lodge, pink
Mrs. Alan Gray, pinkish blue
Mrs. Cuthbertson, rosy purple
Pare De Neuilly, deep violet
Prinrose, amber yellow
Princess Oara, white, dotted lavender
Princess Wenonah, light lavender pink
Prosper Laugier, bronze-red and purple

Prospero, lavender and deep red purple
Quaker Lady, smoky lavender
Queen Caterina, lavender blue
Queen of May, rose pink
Raffet, violet
Ramona, violet
Rose Saltern, white and blue
Roseway, purple, orange heard
R. W. Wallace, rich deep purple
Salonique, cream and red-purple
Shekinah, lemon yellow

Sherwin Wright, golden yellow
Souv. de Mme. Gaudichau, purple
Sweet Lavender, pale lavender
Tenebrae, rich violet purple
Troades, rose and bright crimson
Tropic Seas, deep blue purple
Violaesca Grandiflora, rich blue
Wedgwood, clear blue self
W. H. Eiler, pale yellow
Yellow Moon, light creamy yellow

DWARF VARIETIES

Atriviolacea, early reddish purple
Coerulea, sky blue
Cyanea, dark purple
Dwarf Fairy, white splashed violet
Florida, soft yellow
Moroccan, darkest purple
Schnee Kuppe, white

SIBERIAN VARIETIES

Emperor, fine, tall dark blue
Orientalis, blue-purple
Perry's Blue, blue
Siberica Blue, blue and white
Superba, only purple

IRIS BARGAIN RAINBOW COLLECTION

This collection is a riot of color. It includes 50 varieties, all different, all unlabeled, in as wide a range of color as is possible, including blue, white, purple, pink, lavender, bronze, violet and many others. Plant them this Spring and you will enjoy their beautiful coloring for years to come.

ALL 50 PLANTS, POSTPAID ONLY \$1.00

Your Selection

Any 12 Varieties

from Iris listed on this page, all properly labeled

Postpaid Only \$1

Any 25 Varieties

from Iris listed on this page, all properly labeled

Postpaid Only \$2



IRIS DRIVE

IRIS DRIVE THROUGH TWO YEAR FIELD

WORLDWIDE GLOIUS SALE

OF GOLD MEDAL - PRIZE WINNING Glads - Dahlias - Iris - Peonies - Lilies - Phlox - Etc.

Giant Flowering Dahlias

Our Dahlias last fall were a sight to behold. Such a riot of color is hard to describe. Thousands upon thousands of blooms in every color you can imagine. Many of them of such mammoth size that they seemed unreal.

We are adding about 30 varieties to the excellent list we had last year. These are the most outstanding from a list of more than a hundred we grew in our trial gardens.

Most of the varieties we are listing are the Giants that win the prizes at the flower shows, but in addition to them we are adding some very fine Cactus and Semi-Cactus varieties, besides a dozen or more beautiful Pompons.

All Dahlias we send out are strong root tubers with live eyes, the kind that produces the best results in the shortest possible time. We sell no green plants or rooted cuttings. All tubers can be mailed out any time after March 15th.

The following abbreviations indicate the type each variety belongs to. F. D. - Formal Decorative; S. C. - Semi-Cactus; C. - Cactus; D. - Decorative; I. D. - Informal Decorative; B. - Ball.

USE THE ENCLOSED ORDER BLANK



GIANT FLOWERING DAHLIA

- AIR MAIL, F. D. Very beautiful shade of light lavender pink on long, straight stems. \$2.40 each
- AMELIA GARHART, S. C. Apricot buff with pure white salmon tints shading to soft yellow. Mammoth size, 12 inches or more in diameter. A sure prize winner. \$1.00 each
- AMERICAN BEAUTY, D. American Beauty rose color. \$1.25 each
- AMERICA'S SWEETHEART, F. D. Pure yellow, very large, \$2.00 each
- ANNA BENEDICT, F. D. Extra fine rich deep garnet red which does not fade in the bright sun. Mammoth size. \$1.50 each
- AUSTIN HOWE, F. D. Large clear lavender. \$1.50 each
- BAGDAD, F. D. Scarlet red. \$1.00 each
- BUCKEYE KING, F. D. A clear glowing amber yellow. Very large flower. A separation at all the shows. \$1.50 each
- CAMEO, F. D. Coral rose shaded rose-pink. Good for cutting and exhibition. \$1.00 each
- CAVALCADE, F. D. Beautiful shade of old rose pink. \$1.50 each
- CHARM, D. True fall color of russet and orange. \$1.25 each
- CITY OF CLEVELAND, F. D. Extra fine orange red. Very large, blooms on straight, erect stems. \$2.00 each
- DAZZLER, S. C. Dazzling scarlet. \$1.25 each
- DELICATISSIMA, C. Beautiful blue rose. \$1.50 each
- DELWOOD GLORIOUS, F. D. A beautiful shade of tyran crimson grown. \$1.00 each
- DOROTHY STONE, F. D. True rose pink. \$1.50 each
- DWIGHT MORROW, F. D. Fine large, rich deep crimson red. \$1.00 each
- EAGLE ROCK WONDER, F. D. Sluggish bronze orange flower. \$1.25 each
- EDNA FERBER, S. C. Coral pink and gold. \$1.50 each
- ELEANOR RADELL, F. D. Violet rose. Good strong healthy grower. \$1.75 each
- ELISSA LANDI, F. D. Bright orange and buff. \$1.00 each
- E. R. FANTASY, F. D. Clear yellow pink. Giant blooms, perfect in quality and form. \$1.50 each
- ESTHER HOLMES, S. C. Clear mauve. \$1.25 each
- FLOYD GIBBONS, F. D. Large copper. \$1.50 each
- FORT WASHINGTON, F. D. Velvety maroon. \$1.75 each
- GENTOVA, C. Pure yellow. \$1.25 each
- GIRL OF HILLCREST, F. D. Apricot buff or orange. Vigorous grower, good show variety. \$1.50 each
- GOOD NIGHT, F. D. Oxblood red, shading to maroon. One of the finest dark varieties. Extra robust and a very fine bloomer. \$1.75 each
- GOV. AL SMITH, F. D. Fine shade of orange. \$1.50 each
- HARRY MAYER, F. D. Silvery lavender pink. \$1.35 each
- HUNTS VEILET WONDER, F. D. Rich burgundy violet. 1915 introduction. \$2.50 each
- IDA PERKINS, D. White. \$1.25 each
- JANE COWLE, F. D. Apricot and old gold. One of the most popular of recent introductions. Always sure to bloom. \$1.25 each
- JEAN KERR, D. Cut flower white. \$1.25 each
- JEAN TRIMBLE, F. D. Patuna violet, extra large. \$1.75 each
- JEASORY SOLVIN, F. D. Deep red. \$1.35 each

GIANT DAHLIA BARGAIN

A REAL BARGAIN IN SIX BEAUTIES

This is the finest collection of moderate priced Dahlias ever offered. They are well known as such as we are asking for it. It contains some of the most popular varieties grown.

- One Each of the Following:
Jane Cowle, apricot salmon
Jersey's Beauty, rose pink
White King, glistening white
Melody, golden yellow
Mrs. I. de ver Warner, lavender
Jersey's Beacon, rich scarlet

All Six, Properly Labeled, Postpaid, ONLY \$1.00



CACTUS DAHLIA

- LA REINA, F. D. Extra fine, free blooming, large golden orange. 10 to 12 inches in diameter. \$1.00 each
- MARGARET W. WILSON, F. D. Light lavender pink. Perfect form. \$1.25 each
- MARSHALS BLUE GEM, F. D. Blue-purple, large flower, fine. \$1.75 each
- ORIENTAL GLORY, F. D. Fine large orange. \$1.50 each
- MAYMIE, F. D. Blush crimson. \$1.00 each
- MONMOUTH CHAMPION, F. D. A very large orange scarlet. \$1.50 each
- MONMOUTH GENERAL, F. D. A clear terra cotta red. \$1.00 each
- MRS. I. de ver WARNER, F. D. Pure lavender. Large flower. \$1.25 each
- MURPHY'S MASTERPIECE, F. D. One of the most outstanding varieties. A prize winner everywhere. Color, a rich dark red with large blooms, 12 to 15 inches, held on stiff, long stems. \$1.75 each
- MYRA HOWARD, F. D. A beautiful shade of orange. A little grower and very popular. Giant blooms. Sure winner. \$1.25 each
- ORIENTAL GLORY, F. D. Fine large orange. \$1.50 each
- PAOLO ALTO, S. C. Bright pinkish salmon shading to salmon gold at center. One of the really outstanding varieties. Flowers of enormous size, 10 to 14 inches across and 10 inches deep. Blooms freely from early to late. Has won high praise wherever shown. \$1.00 each
- PANSY G. WHITE, S. C. Pure self colored yellow. \$1.50 each
- PINKY SNOW, F. D. Pure white. \$1.25 each
- POET OF GOLD, F. D. Clear self colored yellow. \$1.00 each
- PRIDE OF CALIFORNIA, D. Deep crimson red. \$1.25 each
- A. V. BURNETT, F. D. Golden bronze red. \$1.50 each
- PRINCE OF PERSIA, F. D. A dark clear scarlet red. Very fine, good exhibition variety. \$1.50 each
- QUEEN EMMA, F. D. Fine form, large flowers on long straight stems, excellent for cutting. Color, a rich glistening golden yellow. \$1.50 each
- QUEEN OF THE YELLOW, B. Clear yellow. \$1.25 each
- ROSE FALLOU, F. D. Very fine orange. \$1.35 each
- RUBY TAYLOR, F. D. High velvety carmine or scarlet. An outstanding variety of excellent size. \$1.50 each
- RUDY VALLE, S. C. High golden color. \$1.35 each
- SAMMY, F. D. Fine yellow. \$1.25 each
- SATAN, S. C. A double flower with yellow on the reverse side of petals. A sure prize winner. Always sure to bloom. \$1.00 each
- SHAHRAZAD, F. D. An outstanding deep pink. Immense blooms. \$1.75 each
- SILVER FRILLS, C. Wine red, striped and tipped with pure white. \$1.25 each
- STAR OF BETHLEHEM, F. D. Pure white. Produces a very profuse bloomer. \$1.00 each
- STRONGHEART, F. D. A light cadmium shaded apricot. \$1.50 each

Pompon Varieties

- AMBER QUEEN, under shaded apricot. \$1.25 each
- BOBBIE, deep plum purple. \$1.25 each
- CATHERINE, yellow, target pink. \$1.25 each
- ELEGANT, lavender purple. \$1.25 each
- GOLDEN QUEEN, clear yellow. \$1.25 each
- HAZEL, yellow buff orange. \$1.25 each
- JOE FETTY, pure white. \$1.25 each
- JOHNNIE, maroon red. \$1.25 each
- LITTLE DAVID, orange red. \$1.25 each
- MARY MANN, under shaded apricot. \$1.25 each
- ROSE, pure white. \$1.25 each
- VIVID, vivid orange red. \$1.30 each
- WHITE PAPPUSOE, pure white. \$1.30 each

POMPON BARGAIN

The Pompon Dahlias are gaining in popularity every year. Their unusual lasting qualities, excellent color and small size make them indispensable for table bouquets and small bouquets.

- ONE EACH OF THE FOLLOWING:
Bobbie, deep plum purple
Amber Queen, under shaded apricot
Joe Fetty, pure white
Vivid, vivid orange red
Little Beauty, rose pink lavender
Little Beauty, rose pink lavender

ALL SIX, PROPERLY LABELED, POSTPAID, ONLY \$1.00

PRIZE WINNING DAHLIA COLLECTION

- AUSTIN HOWE, clear lavender
 - THE COMMODORE, light lemon yellow
 - WHITE WONDER, giant pure white
 - KENTUCKY RED, flaming scarlet
 - THOMAS EDISON, rich royal purple
 - MONMOUTH CHAMPION, large orange scarlet
- ALL TEN VARIETIES, PROPERLY LABELED, ONLY \$3.50

Over 200 Varieties of GLADS to Choose From

Name	Each	Per 12	Name	Each	Per 12
A. E. Kunderd, deep cream	\$1.10	\$12.00	Helen Phipps, deeper than W. H. Phipps	.10	\$1.20
Afame, large flame rose	.10	\$1.20	Helge, salmon pink	.10	\$1.20
Aida, dark blue purple	.10	\$1.20	Herman, mauve lavender	.10	\$1.20
Albania, pure white flower	.10	\$1.20	Hyland Laddie, deep tyran rose	.10	\$1.20
Albatross, fine pure white	.10	\$1.25	Hooper, deep rose, violet blue	.10	\$1.20
Alice Tiplady, orange	.10	\$1.25	Ice Nymph, tall rose lavender	.10	\$1.20
America, clear yellow	.10	\$1.35	Ida Van, red	.05	\$1.35
Anne Eberius, velvety purple	.10	\$1.20	J. A. Carbone, orange salmon	.05	\$1.35
Annie Laurie, apple-blossom pink	.05	\$1.35	Jack London, salmon	.05	\$1.35
Apricot Glow, apricot	.05	\$1.35	Jacobs Van Beyron, deep violet	.10	\$1.20
Aristocrat, pink	.10	\$1.20	Jack Madison, dainty pink	.05	\$1.35
Autumn Beauty, cream yellow	.10	\$1.20	John T. Pyle, malagasy salmon, blotched	.05	\$1.35
Ave Maria, fine blue	.10	\$1.20	Jones Van Dyke, pure white	.15	\$1.00
Barnum, pure white	.10	\$1.20	Joreps Yellow Prim, yellow	.10	\$1.20
Bagdad, large smoky old rose	.10	\$1.20	Josephine, yellow	.10	\$1.20
Baron Hulot, dark indigo blue	.05	\$1.35	K's Glory, ruffled creamy pink	.10	\$1.20
Bertha, white	.10	\$1.20	Lady Marie, salmon pink	.10	\$1.20
Betty Coed, soft creamy pink	.10	\$1.20	La Estrella, fine pure orange	.10	\$1.20
Blue Nuthall, coral pink and orange	.10	\$1.25	La Verne, light yellowish pink	.05	\$1.35
Blue Danube, tall, good blue	.10	\$1.25	Laura, pink white	.05	\$1.35
Blue Ice, blue	.10	\$1.20	Lilac Wonder, light pure lavender	.10	\$1.20
Blushing Beauty, clam-shell pink	.05	\$1.35	Lily White, white	.05	\$1.35
Bobolink, creamy yellow	.10	\$1.20	Longfellow, LaFrance pink	.10	\$1.20
Break O' Day, early, delicate pink	.10	\$1.20	Los Angeles, shrimp pink	.05	\$1.35
Bryon Lee, orchid lavender	.10	\$1.20	Louise, dark lavender, blotched	.10	\$1.20
Cabernet, fine wine color	.10	\$1.25	Lopely, dark yellow	.10	\$1.20
Captain Boyton, fine blotched lavender	.10	\$1.20	Lucette, white	.05	\$1.35
Cardinal Prince, cardinal red	.10	\$1.20	Maiden's Blush, light pink	.05	\$1.35
Cardinal Prince, cardinal red	.10	\$1.20	Maid of Orleans, extra fine salmon	.10	\$1.20
Carson Sylva, pure white	.10	\$1.20	Marmora, lavender gray	.10	\$1.20
Charlotte, coral pink	.10	\$1.20	Maria, beautiful orange	.10	\$1.20
Catherine Coleman, LaFrance pink	.10	\$1.20	Mary Emmet, lavender	.05	\$1.35
Charles Dickens, bright radiant purple	.10	\$1.20	Mary Fry, lavender pink (orchid)	.10	\$1.20
Commander Koehl, deep glowing scarlet	.05	\$1.35	Mary Jane, silvery lavender pink	.10	\$1.20
Copper Bronze, rich brown	.10	\$1.20	Mary Queen, yellow	.10	\$1.20
Coryphaea, soft rose pink	.10	\$1.20	Mildred Louise, strawberry pink	.15	\$1.35
Catmon rose, red	.10	\$1.20	Miss Toy, buff yellow	.05	\$1.35
Dainty Blossom, light pink	.10	\$1.20	Missouri, large clear lavender	.10	\$1.20
Debonair, LaFrance and shrimp pink	.10	\$1.20	Miss Greeley, early salmon pink	.10	\$1.20
Delia, light salmon	.10	\$1.20	Mrs. E. C. Peters, large pink throat	.10	\$1.20
Dr. Elkins, white, purple blotch	.10	\$1.20	Mrs. Madison, dainty pink	.10	\$1.20
Dr. F. C. Bennett, house apricot red	.10	\$1.20	Mrs. W. E. Clark, pink	.10	\$1.20
Dr. Moody, large lavender	.10	\$1.20	Mrs. W. E. Fryer, deep violet red	.10	\$1.20
Dr. Nelson Shook, deep tyran rose	.05	\$1.35	Mrs. Von Konyenbarge, violet blue	.10	\$1.20
Dr. Van Fleet, pink	.10	\$1.20	Mrs. W. E. Clark, pink	.10	\$1.20
Doris Hyde, tall, creamy pink	.10	\$1.20	Mrs. W. E. Clark, pink	.10	\$1.20
Dr. American Beauty, Am. Beauty rose	.15	\$1.80	Mrs. W. E. Clark, pink	.10	\$1.20
Duna, light pinky light	.05	\$1.35	Mrs. W. E. Clark, pink	.10	\$1.20
Early Snowflake, white	.05	\$1.35	Mrs. W. E. Clark, pink	.10	\$1.20
Early Sunrise, deep pink, extra early	.05	\$1.35	Mrs. W. E. Clark, pink	.10	\$1.20
E. J. Shaylor, rose pink	.05	\$1.35	Mrs. W. E. Clark, pink	.10	\$1.20
Elf, creamy white	.10	\$1.20	Mrs. W. E. Clark, pink	.10	\$1.20
Elizabeth Swartzley, early pink	.10	\$1.20	Mrs. W. E. Clark, pink	.10	\$1.20
Elizabeth Tabor, pink, exquisite throat	.10	\$1.20	Mrs. W. E. Clark, pink	.10	\$1.20
Emile Aubrun, bright red	.10	\$1.20	Mrs. W. E. Clark, pink	.10	\$1.20
Ethelyn, yellowish pink	.05	\$1.35	Mrs. W. E. Clark, pink	.10	\$1.20
Eugene Lefebvre, purplish amaranth	.05	\$1.35	Mrs. W. E. Clark, pink	.10	\$1.20
Evelyn Kirlind, rose pink	.05	\$1.35	Mrs. W. E. Clark, pink	.10	\$1.20
Flaming Sword, vermillion	.05	\$1.35	Mrs. W. E. Clark, pink	.10	\$1.20
Gloria Arends, fine salmon pink	.10	\$1.20	Mrs. W. E. Clark, pink	.10	\$1.20
Gertrude Erey, soft shell pink	.05	\$1.35	Mrs. W. E. Clark, pink	.10	\$1.20
Giant Nymph, large rose pink	.05	\$1.35	Mrs. W. E. Clark, pink	.10	\$1.20
Gladiolus, salmon orange	.10	\$1.20	Mrs. W. E. Clark, pink	.10	\$1.20
Gloriania, fine large salmon pink	.05	\$1.35	Mrs. W. E. Clark, pink	.10	\$1.20
Gold, clear yellow	.05	\$1.35	Mrs. W. E. Clark, pink	.10	\$1.20
Golden Dream, fine creamy yellow	.10	\$1.20	Mrs. W. E. Clark, pink	.10	\$1.20
Golden Frills, tall, daffodil yellow	.05	\$1.35	Mrs. W. E. Clark, pink	.10	\$1.20
Halley, large salmon	.05	\$1.35	Mrs. W. E. Clark, pink	.10	\$1.20
Helen Franklin, white, blotched	.05	\$1.35	Mrs. W. E. Clark, pink	.10	\$1.20
Helen Howard, golden buff	.10	\$1.20	Mrs. W. E. Clark, pink	.10	\$1.20



A VIEW SHOWING PART OF A LARGE FIELD OF GLADIOLUS IN FULL BLOOM

Pfeiffer's Gorgeous Glads



"PICARDY"
The world's most popular Glad

For the past 28 years one of our pet hobbies has been growing prize-winning Glads. This past season in spite of the hot, dry summer, we were again able to grow and harvest our usual large crop of bulbs. We have in our cellars now nearly three thousand bushels of as fine a lot of bulbs as can be grown. Nearly three hundred varieties, many of them the finest obtainable anywhere. By this we do not mean the highest priced. We have never specialized in bulbs which retail for from \$5.00 to \$25.00 each, but rather in the more moderate priced varieties which are outstanding enough to compete at flower shows everywhere and win the prizes.

Many of our customers have wondered how we can sell such a high quality bulb for the extremely low prices we do, but this is easily explained by the fact that we are growers and not jobbers, and in selling them direct to our customers we are able to eliminate all middle-man's profits. We are also able to furnish you these extra quality bulbs at low prices because of the fact that we have excellent storage and handling facilities for them, thereby eliminating a lot of added expense in handling.

We are listing over two hundred varieties for those of you who wish to make your own selections; but for those of you who are willing to trust to our experience we are making up several extra fine collections. These collections are all outstanding. We are sure you will be able to find just exactly the one that fits your requirements. In making up these collections we have put into them all the experience we have received ourselves in growing hundreds of varieties for the past twenty-eight years.

All bulbs used are large blooming size bulbs, and with reasonable care and weather will give you excellent results.



GOLD MEDAL

This is a picture of the Gold Medal we won at the Minnesota Glad Society Show held in Minneapolis, August 14th and 15th, 1928 for the most pointed sword in the open class. We won ten first, ten second and ten third prizes at this show, all after carrying the flowers 125 miles in the back of a car. Many also saw our collection of fifty varieties delivered to be the finest collection they had ever seen at any show.

This past season (1929) we again won first in our collection of thirty varieties at the Minnesota State Gladiolus Show, second in our collection of seventy-five varieties at the Minnesota State Fair, besides having the Championship vase of three in the Decorative Class and winning dozens of other first, second and third prizes in similar lots and collections.

200 Varieties (continued)

Name	Each	Per 12	Name	Each	Per 12
Pedregira, best deep blue purple	.15	\$1.25	Rockaway, yellow and orange	.10	\$1.20
Pfeiffer's Triumph, large orange red	.10	\$1.20	Rosalia, yellow and orange	.10	\$1.20
Picardy, beautiful apricot-salmon	.10	\$1.20	Rose Ash, ashes of roses	.05	\$1.35
Pink Perfection, clear pink	.10	\$1.20	Rosella, rose mauve	.05	\$1.35
Pink Wonder, light pink	.10	\$1.20	Ruffalo, beautiful yellow	.10	\$1.20
Polar Ice, wax pure white	.10	\$1.50	Salmon Beauty, salmon yellow	.05	\$1.35
Pride of Waukegan, dark rose pink	.10	\$1.20	Salmon Glow, orange salmon	.05	\$1.35
Prim Sport, cream pink	.10	\$1.20	Salsbach's Orchid, dainty orchid pink	.10	\$1.25
Primrose, best rich yellow	.10	\$1.20	Salsbach's Pink, apple-blossom pink	.10	\$1.25
Prince of Wales, salmon orange	.10	\$1.20	Scarlet, smoky purple	.10	\$1.20
Princely, fine tinted white	.10	\$1.20	Scarlet Princess, beautiful red	.05	\$1.35
Princely, red, white, blotch	.10	\$1.20	Scarlet Wonder, fine scarlet	.05	\$1.35
Quaker Maid, light lavender pink	.10	\$1.20	Schwaben, yellow, blotched throat	.05	\$1.35
Queen of Bremen, orchid pink	.10	\$1.20	Schwaben Girl, pure pink	.15	\$1.25
Quinton, coral pink	.05	\$1.35	Senorita, beautiful orange	.10	\$1.25
Red Phipps, beautiful flame red	.10	\$1.25	Sheila, light coral pink	.05	\$1.35
Richard Diener, geranium pink	.10	\$1.25	Shell Pink, light rose pink	.05	\$1.35
Rosalie, yellow and orange	.10	\$1.20	Sidney Plummer, late soft yellow	.05	\$1.35
Rose 1910, early rose pink	.05	\$1.35	Silverheaven, salmon pink	.10	\$1.20
Rose Ash, ashes of roses	.05	\$1.35	Smokey, clear brown	.10	\$1.25
Rosella, rose mauve	.05	\$1.35	Souvenir, pure canary yellow	.05	\$1.35
Ruffalo, beautiful yellow	.10	\$1.20	Sovereign, deep velvety purple	.10	\$1.20
Salmon Beauty, salmon yellow	.05	\$1.35	Snow Boy, white, purple throat	.05	\$1.35
Salmon Glow, orange salmon	.05	\$1.35	Spirit of St. Louis, burnt orange	.10	\$1.20
Salsbach's Orchid, dainty orchid pink	.10	\$1.25	Star of Bethlehem, honest pure white	.25	\$1.00
Salsbach's Pink, apple-blossom pink	.10	\$1.25	Sweet Lavender, light lavender	.10	\$1.20
Scarlet, smoky purple	.10	\$1.20	Sydonia, clear purple	.05	\$1.35
Scarlet Princess, beautiful red	.05	\$1.35	Theda, shrimp pink, yellow throat	.05	\$1.35
Scarlet Wonder, fine scarlet	.05	\$1.35	The Orchid, orchid like in shape and color	.10	\$1.20
Schwaben, yellow, blotched throat	.05	\$1.35	The Swallow, yellow	.10	\$1.20
Schwaben Girl, pure pink	.15	\$1.25	Tiffany, pure white	.10	\$1.20
Senorita, beautiful orange	.10	\$1.25	Tycko Zang, large salmon pink	.10	\$1.20
Sheila, light coral pink	.05	\$1.35	Veilchenblau, clear blue	.10	\$1.20
Shell Pink, light rose pink	.05	\$1.35	Vesuvius, blood red	.10	\$1.20
Sidney Plummer, late soft yellow	.05	\$1.35	Victory Chateau Thierry, large bright red	.10	\$1.20
Silverheaven, salmon pink	.10	\$1.20	Violet Beauty, cream violet	.05	\$1.35
Smokey, clear brown	.10	\$1.25	Virginia Hale, creamy rose pink	.10	\$1.20
Souvenir, pure canary yellow	.05	\$1.35	Wasaga, very beautiful buff	.15	\$1.25
Sovereign, deep velvety purple	.10	\$1.20	White Butterfly, white	.10	\$1.20
Snow Boy, white, purple throat	.05	\$1.35	White Wonder, white	.10	\$1.20
Spirit of St. Louis, burnt orange	.10	\$1.20	Wilberine, lavender pink	.05	\$1.35
Star of Bethlehem, honest pure white	.25	\$1.00	Willie Wigan, blotched white	.05	\$1.35
Sweet Lavender, light lavender					

It pays to plant Pfeiffer's

PRIZE WINNING FLOWERS



L. E. PFEIFFER

Son of C. A. Pfeiffer, who has been in this business 27 years with his father, working and helping to increase the Pfeiffer reputation for quality.



C. A. PFEIFFER

Founder of the Pfeiffer Nursery, Specialist in the propagation of Peonies, Iris and Gladiolus bulbs.

The pleasure and satisfaction you derive from raising flowers is in direct proportion to the beauty and size of the blossoms you produce. We here at this Nursery know you must have good stock to produce lovely flowers. We believe that when you go to the trouble to plant and care for flowers, you should have stock that will reward your efforts.

Every single Pfeiffer plant or bulb is of prize-winning quality that will give you larger blooms of more brilliant coloring and luxurious foliage than just ordinary "garden varieties."

"Pfeiffer Quality" has gained a national reputation. Orders from our patrons have been more plentiful this past season due to their success with Pfeiffer propagated bulbs and roots. Pfeiffer's have always felt that satisfied customers are their best advertisers.

Volume production has made it possible to lower prices on many items, and to offer many attractive bargain collections in the different plants and bulbs.

The location of the Nursery at Winona is especially favorable as the soil of the Mississippi Valley is such a combination of soils that plants grown here do well in practically all soils. They grow fast and are unusually hardy since the winter seasons are severe and the growing seasons short. These conditions are in part responsible for the excellent success flower lovers in all parts of the country have with Pfeiffer's Prize-Winning Quality Stock.

Delphinium

Gold Medal Hybrids

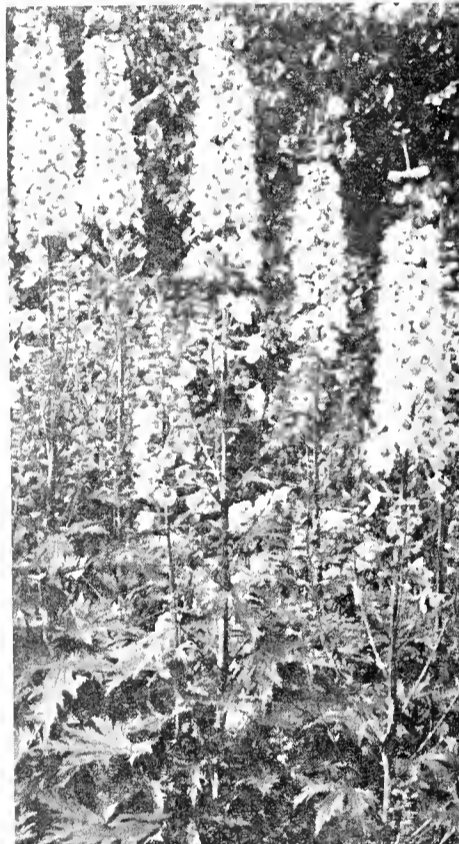
We have improved our strain of Hybrids by selecting seed from choice plants the past 12 years, until now they are hard to surpass. They are of unusually strong habit of growth, extraordinary hardy and very free blooming. They include all shades from clear light blue to deep velvety purple, from lavender pink to dark violet. Being Hybrids, it is of course impossible for us to tell what color they will be when dug, but in ordering a dozen or a \$1.00 Bargain, you are sure to get many of them.

Strong 2 year clumps . . . 25c each; 3 for 60c

DELPHINIUM BARGAIN

Gold Medal Hybrids

6 STRONG 2-YEAR CLUMPS, Postpaid, ONLY \$1.00



GOLD MEDAL Hybrid Delphinium

MENOMONIE, WIS.

"I would like you to know how delighted I am with the Peonies, Iris and Phlox I received from you last spring. They were the strongest and healthiest plants I have ever received and I am more than pleased. Many thanks for the extra Peony." Mrs. W. L.

BLEEDING HEART

DICENTRA SPECTABILIS



This old-fashioned flower is still a favorite with everyone. Its long racemes of graceful, heart-shaped, pink flowers are always attractive. It blooms early, and here in Minnesota is always in bloom for Memorial Day. It is equally effective as a cut flower or a border plant, and after the flowers are gone, the cut-leaved foliage lends a pleasing effect in the perennial planting.

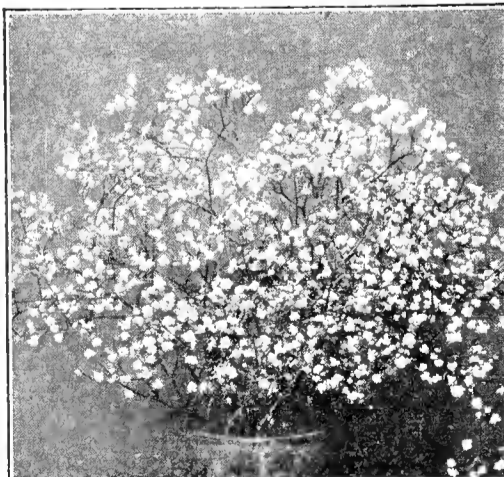
Strong plants 50c each; 3 for \$1.25

BABY'S BREATH

GYPSOPHILA BRISTOL FAIRY

This new, extra large, double Gypsophila has great vigor, and produces much larger flowers than the ordinary variety. It grows about two feet high, and will bloom almost continuously if the flowers are picked. It is unsurpassed in mixed bouquets or will produce a pleasing effect in the border. It does well anywhere.

Strong 2 year roots - - 75c each; 3 for \$2.00



GYPSOPHILA BRISTOL FAIRY

Please Read This

SHIPMENTS will be made at the proper planting time early in the spring of 1937. TRANSPORTATION in the U. S. prepaid Express or Parcel Post, whichever we deem most expedient. Be sure to state if your Express office is different from Postal address.

TERMS. Cash with order, either check, draft or Money Order. If personal check, please add necessary amount extra for exchange.

OUR GUARANTEE. We guarantee every plant or bulb sold by us to be first class in every respect, free from any injurious disease or insect, and true to name. If package is damaged in transit have your Express Agent or Postmaster make a note to that effect on receipt of same. We cannot be responsible for loss by conditions over which we have no control such as hail, wind, drought, pestilence, floods or winter killing. We will replace free of charge anything which proves to be wrongly named, but cannot be held liable beyond this.

USE THE ENCLOSED ORDER BLANK

HEMEROCALLIS

Yellow Day Lily

Well known family resembling Lilies in character and bloom, usually sweet scented, and bearing a great quantity of yellow flowers during long periods of summer. Very showy in the garden. 2 to 4 feet in height.

DR. REGEL. Handsome rich orange-yellow. Flowers in May. Very fragrant; fine for cutting. 1½ feet. 30c each; 3 for 75c

FLAVA. (Lemon Lily.) Sweet scented; clear full yellow. Flowers in June. 2½ feet. 30c each; 3 for 75c

GOLD DUST. Lighter shade of yellow than Dr. Regel, and a few days later to bloom. 2 to 2½ ft. 30c each; 3 for 75c

THUNBERGI. A tall growing late variety. blooms in July. Flowers are of large size and of lemon-yellow color. 30c each; 3 for 75c

HEMEROCALLIS COLLECTION

One Each of the Above Four Hemerocallis. All Four, Postpaid **\$1.00 ONLY**

Three Each of the Above Four Hemerocallis. All Twelve, Postpaid, **\$2.50 ONLY**

The Pfeiffer Nursery - Winona, Minn.